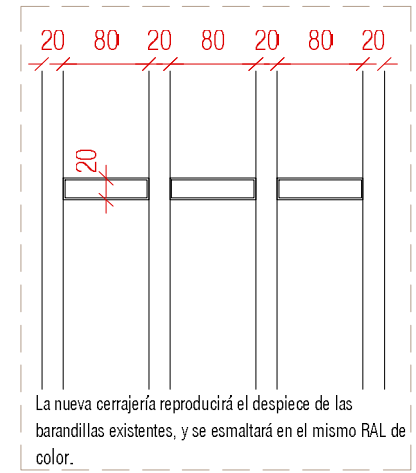
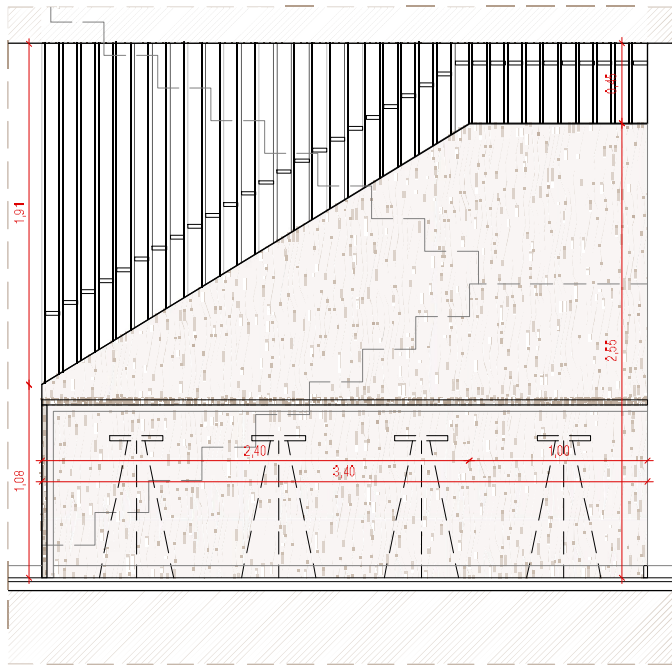


CARPINTERÍAS INTERIORES Y EXTERIORES E:1/50

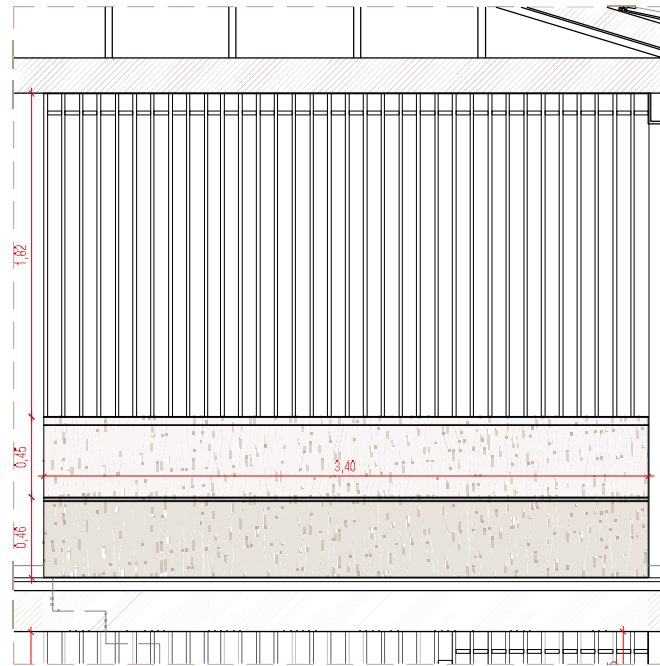


La nueva cerrajería reproducirá el despiece de las barandillas existentes, y se esmaltará en el mismo RAL de color.

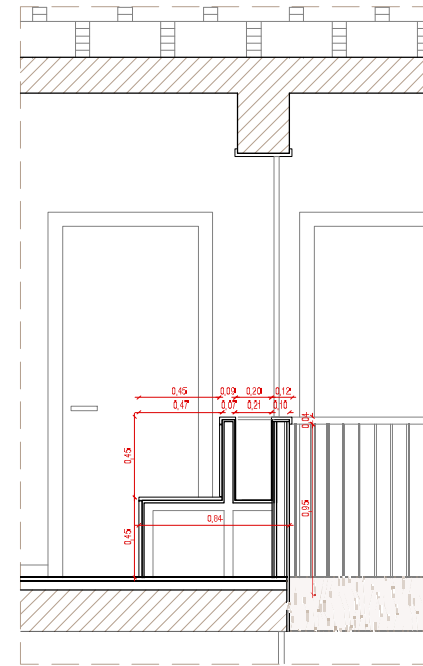
DETALLE CERRAJERÍA E:1/5



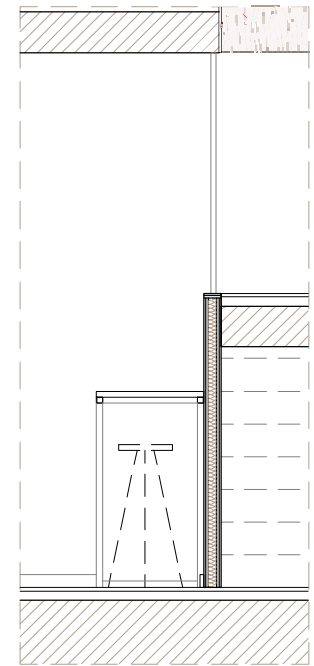
ALZADO BARANDILLA PB E:1/30



ALZADO BARANDILLA P1 E:1/30



SECCIÓN BANCADA P1 E:1/30



SEC. TRANSV BARANDILLA E:1/30